

Heavy-duty Socket Mount bases

Gusset Reinforced welded stainless steel mount bases

For mounting onto vessels, structures, towers or heavy-duty masts

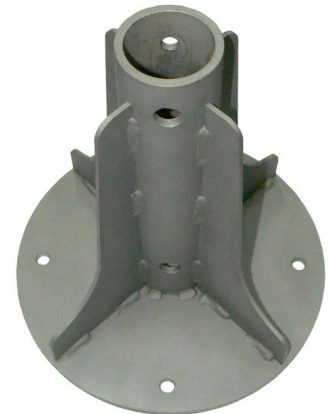


Our in-house manufactured heavy-duty socket mount bases are constructed of a gusset reinforced stainless steel body with locking bolts for antenna securing and large diameter mount plate with mount holes for increased security onto your structure, tower or mast head.

The A-1429-2 can be custom height manufactured to suit your requirements and or specific antenna. The A-1429-2 has a cable entry slot at the base to better route your coaxial cable. The A-1429 overall height allows for side access of your antenna along the lines or our HM300 HF 2-30 MHz communications antenna.

We can custom manufacture mounting hardware to suit your specific requirements/installation location, simply contact us directly and our in-house engineering and manufacturing facility can assist with a solution.

	A-1429
Construction	Fully-welded gusset reinforced stainless steel
Internal capability	Maximum 59.6mm O.D. - suits HM300
Dimensions	Plate diameter: 300mm Overall height: 313mm Mount base holes: 4 x 13mm holes at 90° offset
Mounting hardware	2 x M12 through bolts with nyloc nuts supplied for securing antenna Base to surface securing bolts not supplied - source separately to suit your mounting surface
Suitable antennas or Accessories	HM300 heavy-duty HF 2-30 MHz communications antenna Also suitable for NBS telescopic masts, flag/lighting/surveillance poles etc
Installation tools required	<u>19mm spanners for securing bolts tightening</u>



A-1429



A-1429 fitted onto HM300 HF communications antenna

	A-1429-2
Construction	Fully-welded double gusset reinforced stainless steel
Internal capability	Maximum 90mm O.D. - can be modified to suit requirements
Dimensions can specify requirements	Plate diameter: 330mm Overall height: 1500mm - can be customised to suit requirements Mount base holes: 8 x 10.54mm holes at 45° offset
Mounting hardware	8 x M10 bolts supplied for securing antenna inside tube and setting insert height at base Base to surface securing bolts not supplied - source separately to suit your mounting surface
Suitable antennas or Accessories	Any antenna with a 90mm O.D base tube, such as our 2-piece DVA series and/or light/equipment poles.
Installation tools required	<u>17mm spanners for bolt securing.</u>



A-1429-2

Marine Antenna Mounts

Fold down, side and mast mount adaptors
For mounting onto vessels, structure or towers

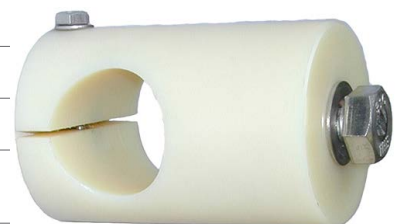
	NSM-B20M
Construction	Machined toughened nylon and 316 stainless steel fastening
Antenna capability	20-22mm mount section such as ZM108A or CM1600 series
Mounting hardware	1 x 1/2" BSW x 30mm mount bolt + 1 x M6 x 60mm antenna securing bolt - included
Mounting position recommended	Any vertical flat surface, from a wheelhouse wall, caravan, trailer or any vertical flat surface - as high on vessel/structure as possible - requires min. 12mm hole
Installation tools required	19mm spanner for mount bolt securing 10mm spanner for antenna securing bolt



	NSM-CL2642
Construction	Machined toughened nylon and 316 stainless steel fastening
Antenna capability	32mm mount section such as B20G or B20G-N
Mounting hardware	1 x 1/2" BSW x 30mm mount bolt + 1 x M6 x 60mm antenna securing bolt - included
Mounting position recommended	Any vertical flat surface, from a wheelhouse wall, caravan, trailer or any vertical flat surface - as high on vessel/structure as possible - requires min. 12mm hole
Installation tools required	19mm spanner for mount bolt securing 10mm spanner for antenna securing bolt



	NSM-218
Construction	Machined toughened nylon and 316 stainless steel fastening
Antenna capability	38mm mount section such as HM218-M
Mounting hardware	1 x 1/2" BSW x 30mm mount bolt + 1 x M6 x 60mm antenna securing bolt - included
Mounting position recommended	Any vertical flat surface, from a wheelhouse wall, caravan, trailer or any vertical flat surface - as high on vessel/structure as possible - requires min. 12mm hole
Installation tools required	19mm spanner for mount bolt securing 10mm spanner for antenna securing bolt



	NSM-223
Construction	Machined toughened nylon and 316 stainless steel fastening
Antenna capability	50mm mount section such as B20G or B20G-N
Mounting hardware	1 x 1/2" BSW mount bolt and 1 x M6 antenna securing bolt - included
Mounting position recommended	Any vertical flat surface, from a wheelhouse wall, caravan, trailer or any vertical flat surface - as high on vessel/structure as possible - requires min. 16mm hole
Installation tools required	24mm spanner for mount bolt securing 13mm spanner for antenna securing bolt

